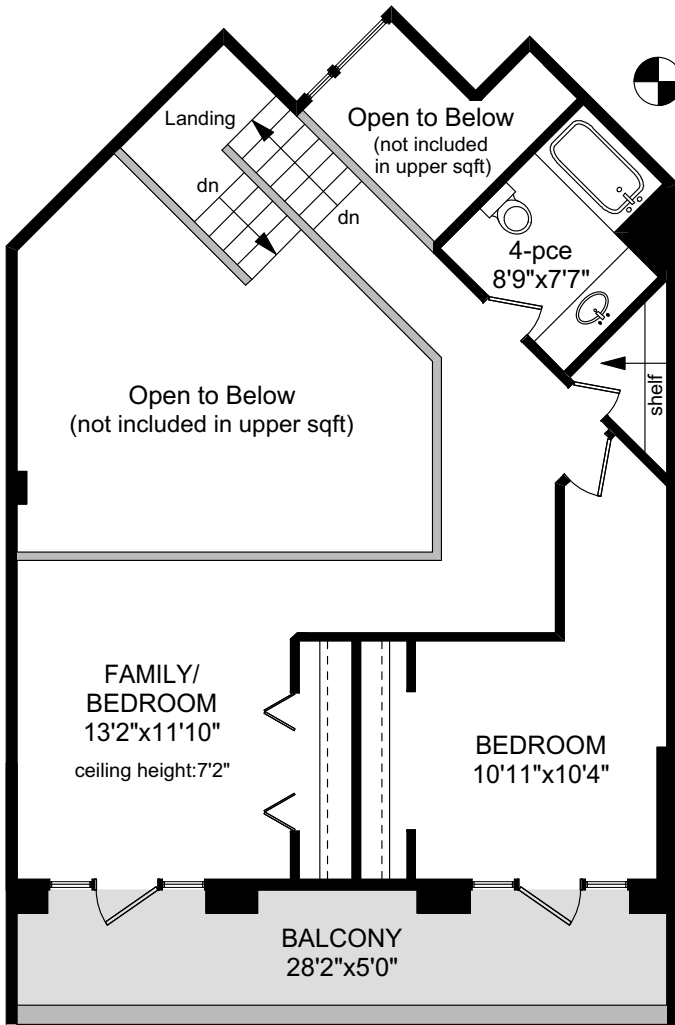
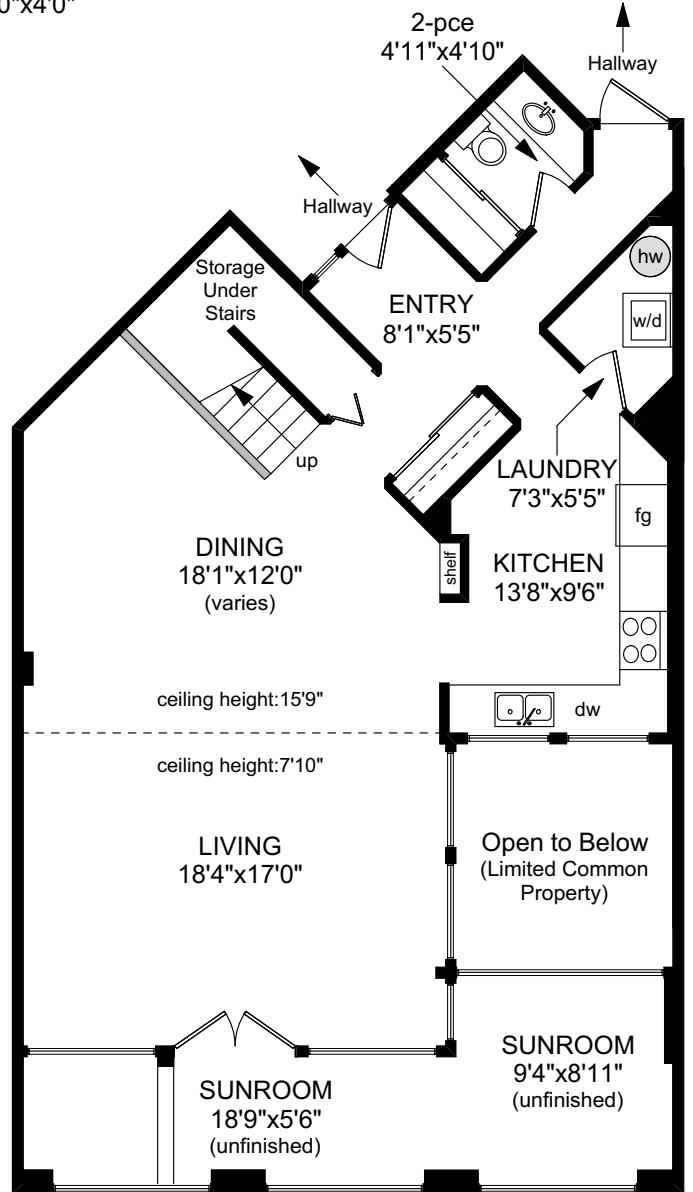


301 - 1407 GOVERNMENT STREET



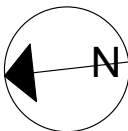
STORAGE
6'0"x4'0"



MAIN FLOOR
1139 SQ.FT.

NOTE: The room name labels/sizes are for viewing reference only. They are not to be used for calculating total square footage.

	FINISHED SQ. FT.	UNFINISHED SQ. FT.	TOTAL SQ. FT.
MAIN	918	221	1139
UPPER	649	0	649
TOTAL	1567	221	1788
BALCONY	0	166	166



PREPARED FOR THE EXCLUSIVE USE OF
FARRELL & ASSOCIATES OF
MACDONALD REALTY VICTORIA

MEASURED ON: 09/23/24
DRAWING FILE: 19002

Tafe Measure VICTORIA, B.C.
Ph.2508838894
www.tafemeasure.com