

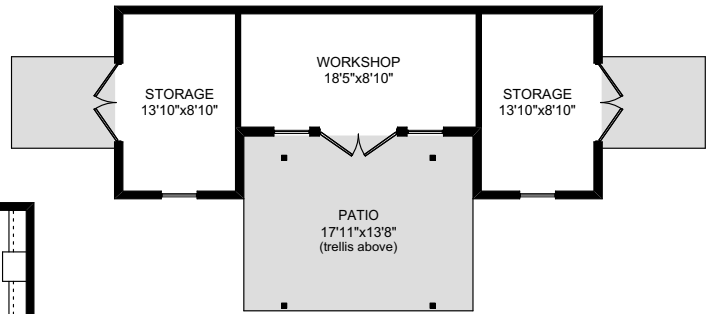
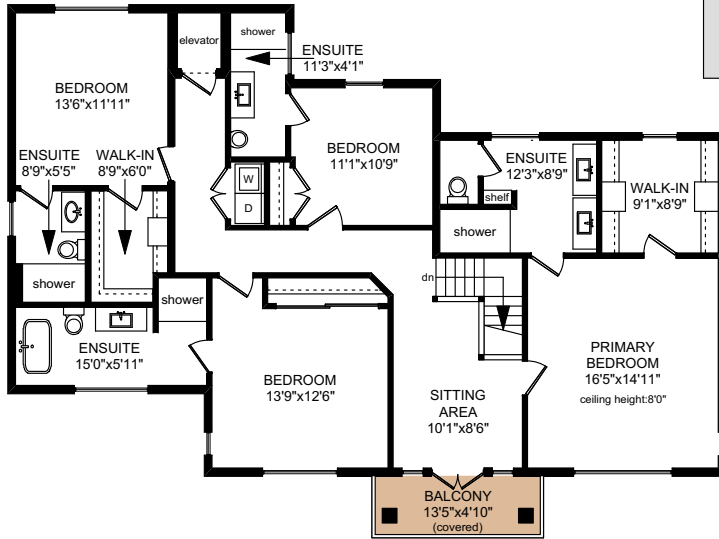
3145 EXETER ROAD



WORKSHOP/STORAGE
486 SQ.FT.



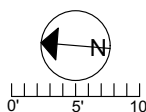
UPPER FLOOR
1680 SQ.FT.



MAIN FLOOR
2346 SQ.FT.

NOTE: The room name labels/sizes are for viewing reference only.
They are not to be used for calculating total square footage.

	FINISHED SQ. FT.	UNFINISHED SQ. FT.	TOTAL SQ. FT.
MAIN	2346	0	2346
UPPER	1680	0	1680
TOTAL	4026	0	4026
<hr/>			
GARAGE	0	604	604
WORKSHOP	0	191	191
STORAGE	0	295	295
SHED	0	73	73
DECKS	0	361	361
PATIOS	0	1738	1738



PREPARED FOR THE EXCLUSIVE USE OF
FARRELL & ASSOCIATES OF
MACDONALD REALTY VICTORIA

MEASURED ON: 01/02/24
DRAWING FILE: 18778

Tafe Measure VICTORIA, B.C.
Ph. 2508838894
www.tafemeasure.com