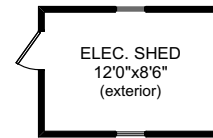
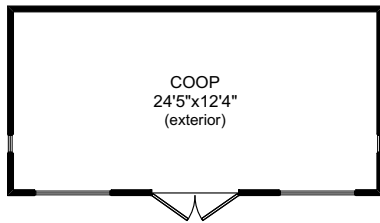
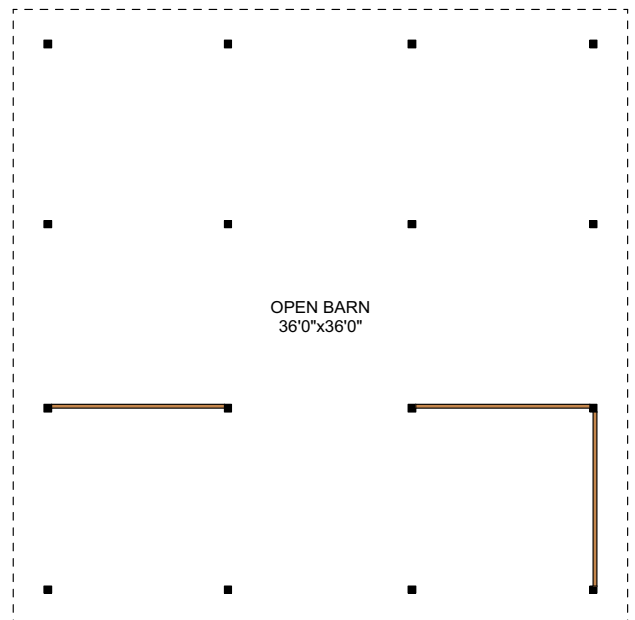
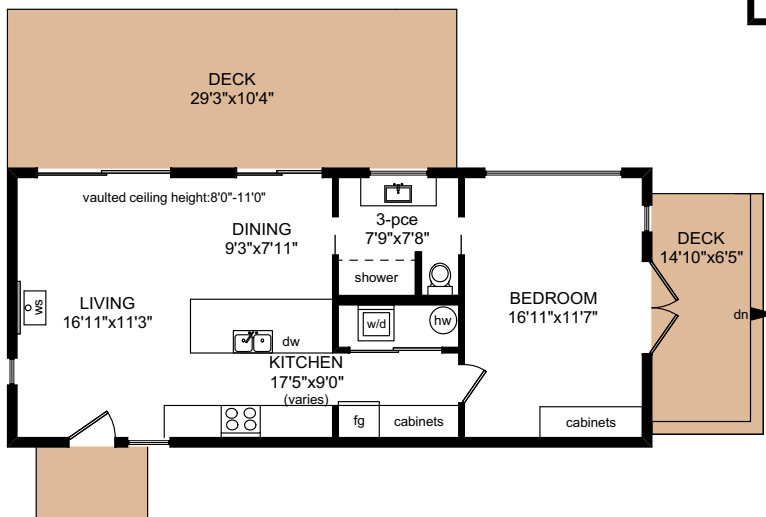
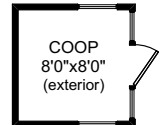
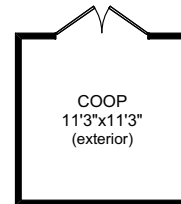
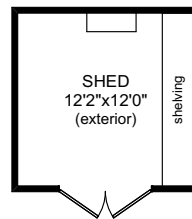


# 1020 MATHESON LAKE PARK ROAD (Outbuildings)

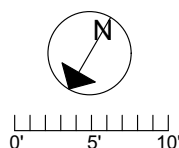


\*Outbuildings not shown in exact location\*



NOTE: The room name labels/sizes are for viewing reference only.  
They are not to be used for calculating total square footage.

	FINISHED SQ. FT.	UNFINISHED SQ. FT.	TOTAL SQ. FT.
MAIN	1821	0	1821
UPPER	970	0	970
LOWER	1739	87	1826
TOTAL	4530	87	4617
UPPER STORAGE	0	228	228
GARAGE	0	710	710
DECKS	0	1026	1026
PORCH	0	183	183
PATIO	0	290	290
COTTAGE	762	0	762
DECKS	0	638	638
SHEDS/COOPS	0	740	740
BARN	0	1296	1296



PREPARED FOR THE EXCLUSIVE USE OF  
FARRELL & ASSOCIATES OF  
MACDONALD REALTY VICTORIA

MEASURED ON: 05/24/23  
DRAWING FILE: 18600

**Tafe** Measure VICTORIA, B.C.  
Ph.2508838894