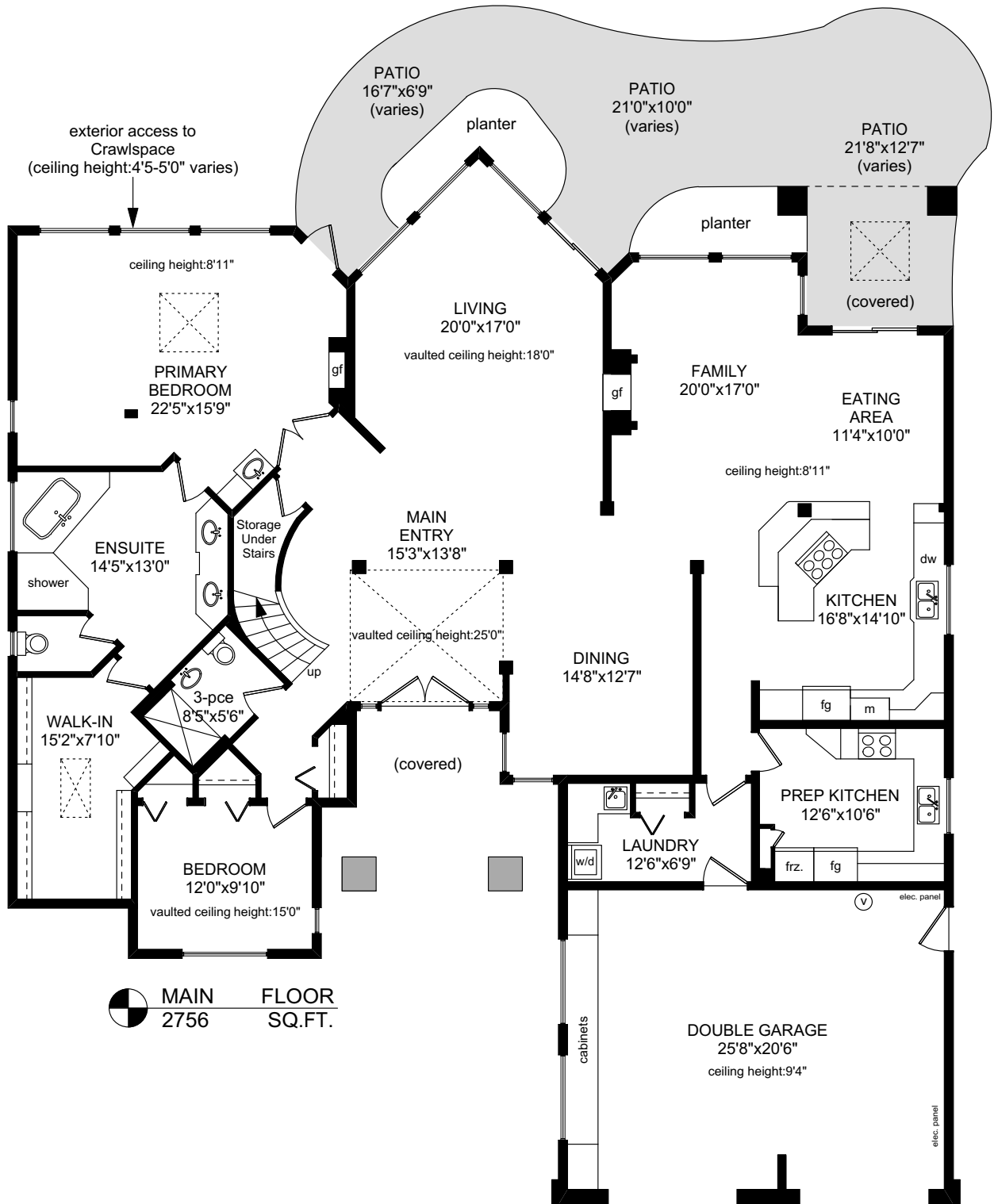



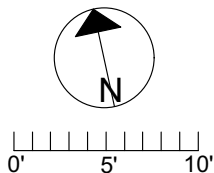
1576 MILEVA LANE




MAIN FLOOR
 2756 SQ. FT.

NOTE: The room name labels/sizes are for viewing reference only. They are not to be used for calculating total square footage.

	FINISHED SQ. FT.	UNFINISHED SQ. FT.	TOTAL SQ. FT.
MAIN	2756	0	2756
UPPER	1964	0	1964
TOTAL	4720	0	4720
GARAGE	0	590	590
DECKS	0	322	322
PATIOS	0	584	584



PREPARED FOR THE EXCLUSIVE USE OF
 LESLEE FARRELL, ASSOCIATE BROKER,
 MACDONALD REALTY Ltd.

MEASURED ON: 06/08/21
 DRAWING FILE: 17982

Tafmeasure VICTORIA, B.C.
 Ph. 883.8894
 www.tafmeasure.com