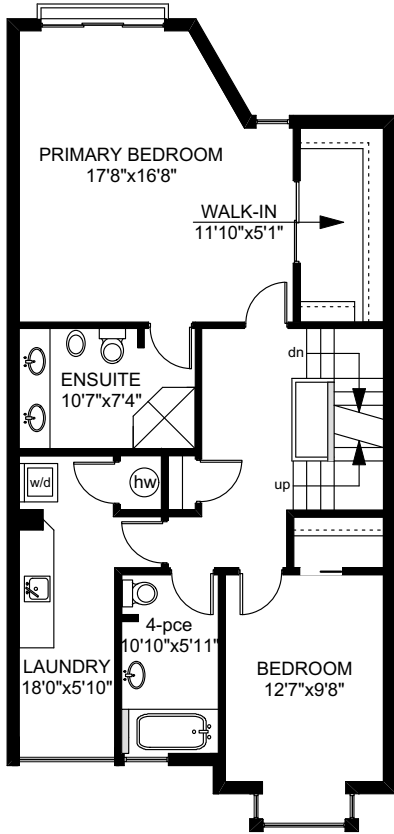
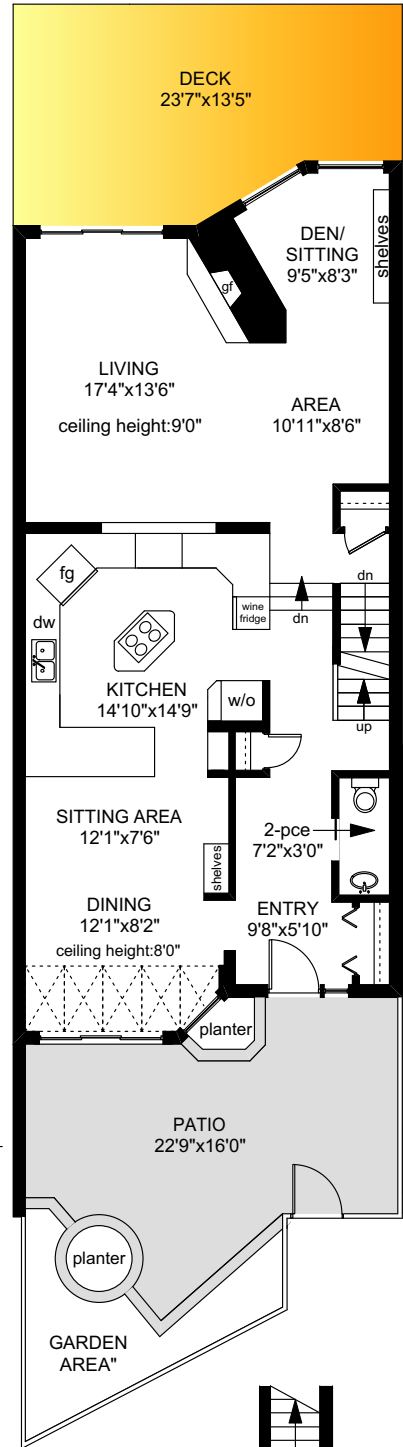


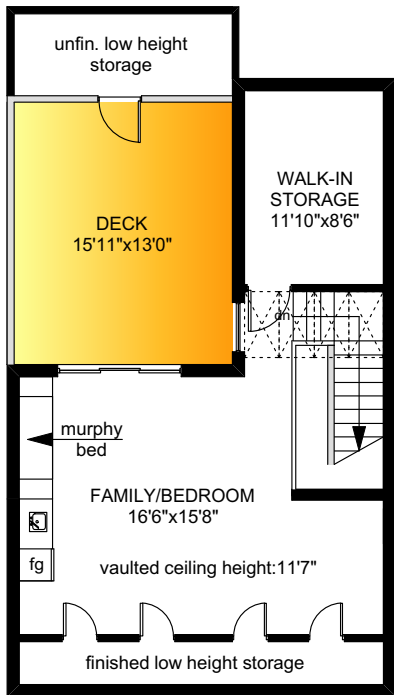
239 BELLEVILLE STREET



SECOND FLOOR
976 SQ.FT



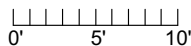
MAIN FLOOR
1121 SQ.FT



THIRD FLOOR
684 SQ.FT

LOWER FLOOR
76 SQ.FT

	FINISHED SQ. FT.	UNFINISHED SQ. FT.	TOTAL SQ. FT.
MAIN	1121	0	1121
SECOND	976	0	976
THIRD	605	79	684
LOWER	76	0	76
TOTAL	2778	79	2857
DECKS	0	490	490
PATIO	0	430	430



Revised: November 10th, 2020

PREPARED FOR THE EXCLUSIVE USE OF
CONNIE BROWN
MACDONALD REALTY VICTORIA

MEASURED ON: 02/03/10
DRAWING FILE: 9286

Tafe Measure VICTORIA, B.C.
Ph. 883.8894
www.tafemeasure.com