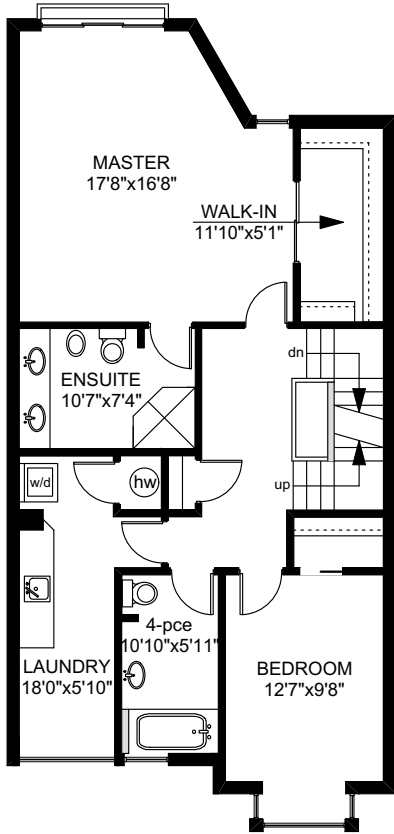
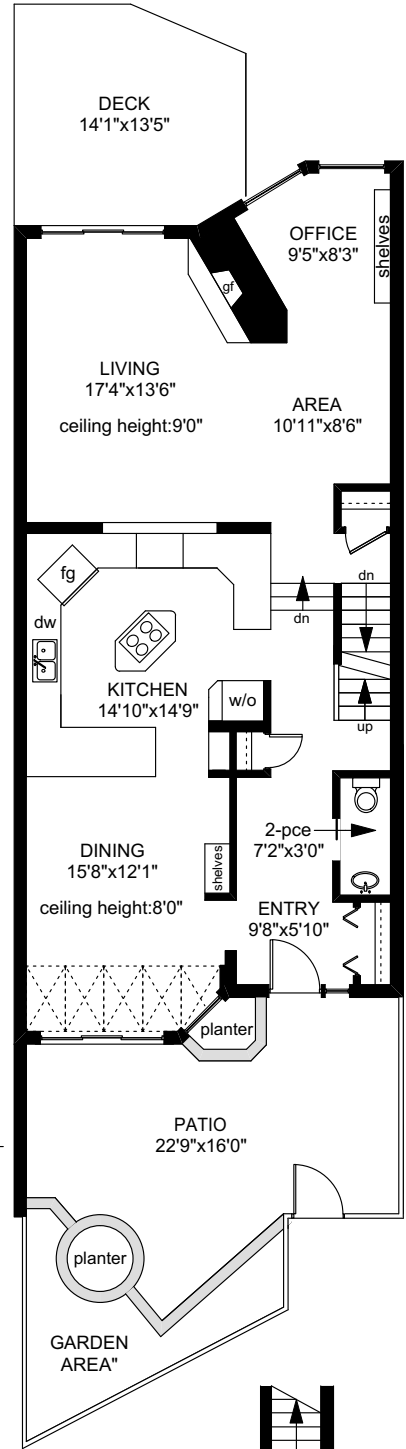


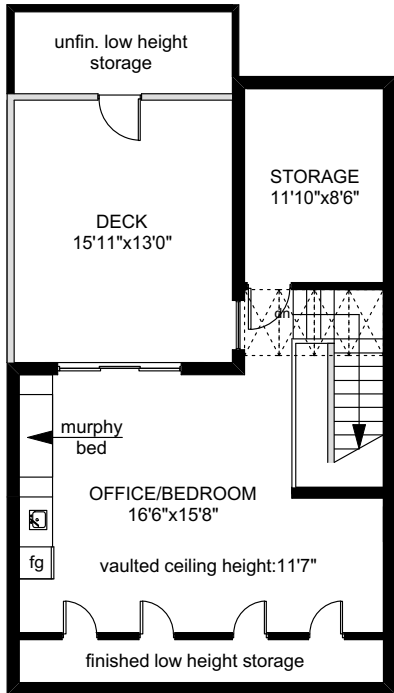
# 239 BELLEVILLE STREET



SECOND FLOOR  
976 SQ.FT



MAIN FLOOR  
1121 SQ.FT



THIRD FLOOR  
684 SQ.FT

LOWER FLOOR  
76 SQ.FT

	FINISHED SQ. FT.	UNFINISHED SQ. FT.	TOTAL SQ. FT.
MAIN	1121	0	1121
SECOND	976	0	976
THIRD	605	79	684
LOWER	76	0	76
<b>TOTAL</b>	<b>2778</b>	<b>79</b>	<b>2857</b>
DECKS	0	385	385
PATIO	0	430	430



0' 5' 10'

Revised: January 24th, 2020

PREPARED FOR THE EXCLUSIVE USE OF  
LESLEE FARRELL OF  
MACDONALD REALTY VICTORIA

MEASURED ON: 02/03/10  
DRAWING FILE: 07925

**Tafe Measure** VICTORIA, B.C.  
Ph. 883.8894  
www.tafemeasure.com