
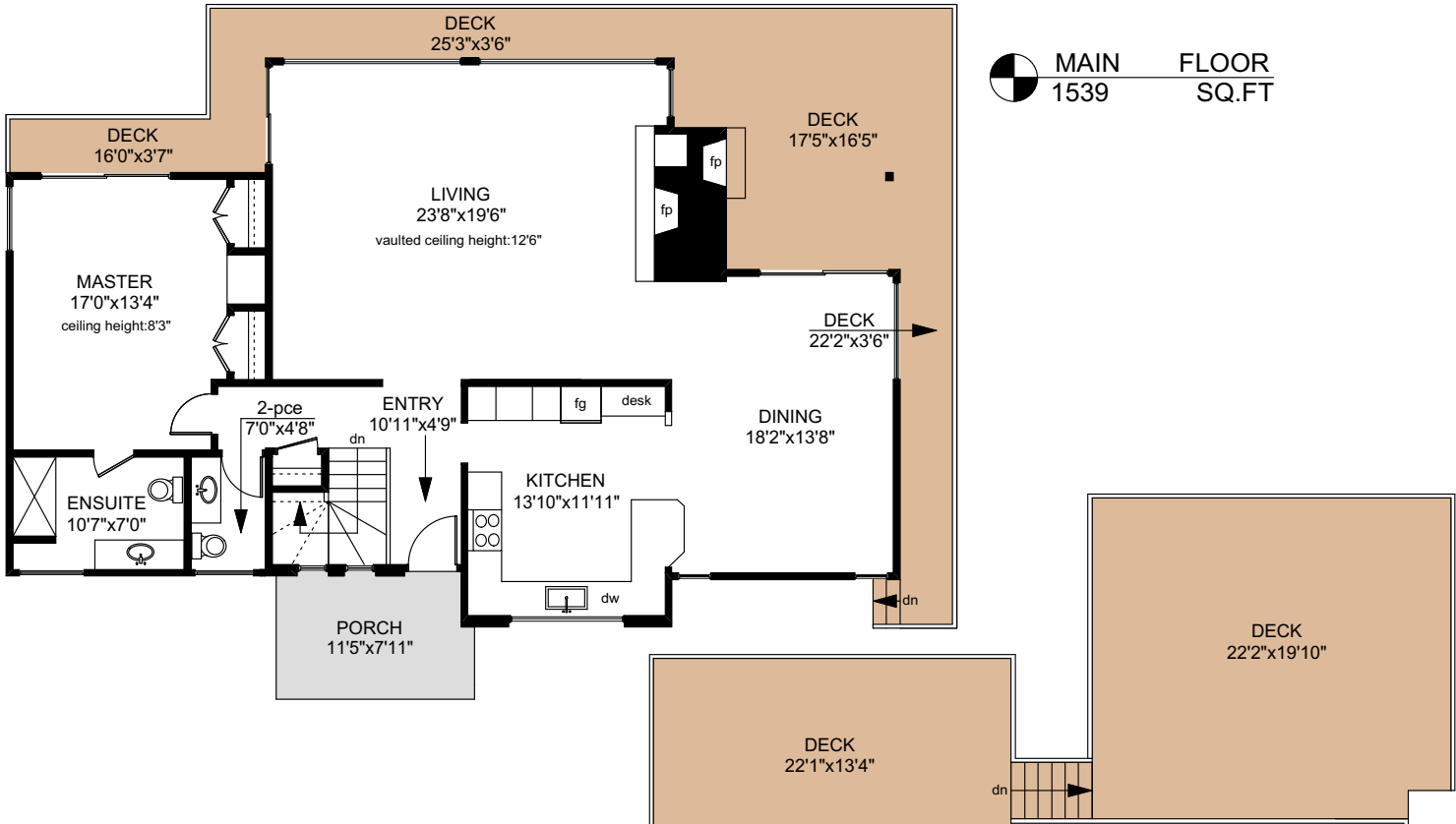

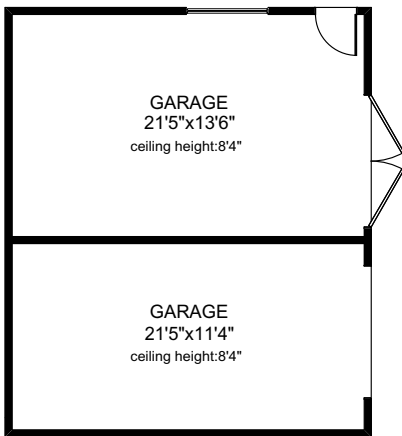
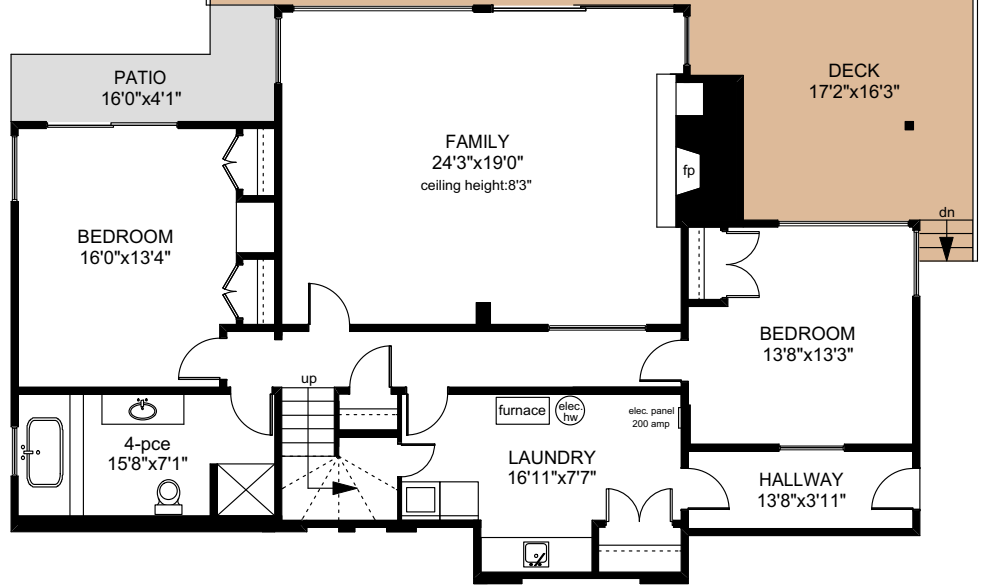


4589 LEYNS ROAD

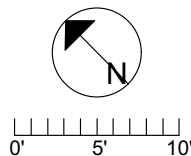
 **MAIN FLOOR**
1539 SQ.FT



 **LOWER FLOOR**
1539 SQ.FT



| | FINISHED SQ. FT. | UNFINISHED SQ. FT. | TOTAL SQ. FT. |
|--------------|---------------------|-----------------------|------------------|
| MAIN | 1539 | 0 | 1539 |
| LOWER | 1539 | 0 | 1539 |
| TOTAL | 3078 | 0 | 3078 |
| GARAGE | 0 | 579 | 579 |
| DECKS | 0 | 1504 | 1504 |
| PATIO | 0 | 77 | 77 |



PREPARED FOR THE EXCLUSIVE USE OF
 SEAN FARRELL OF MACDONALD REALTY Ltd.

MEASURED ON: 06/08/17
 DRAWING FILE: 14322

Tafe Measure VICTORIA, B.C.
 Ph. 883.8894
 www.tafemeasure.com