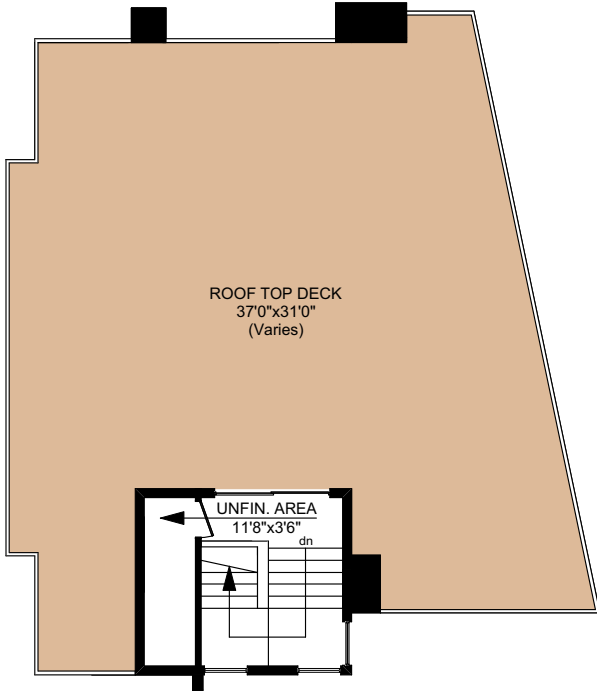
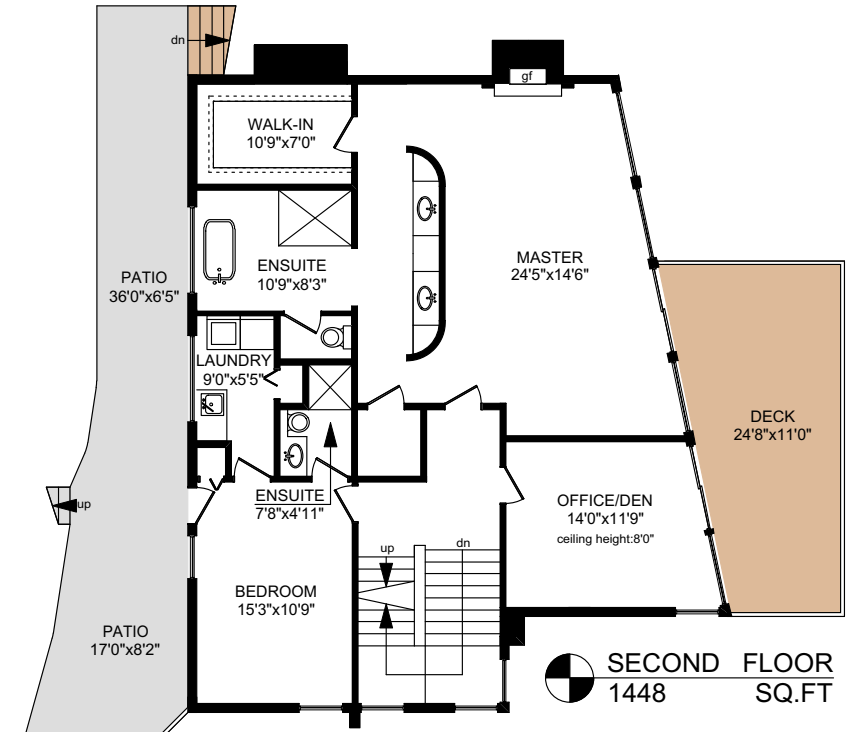


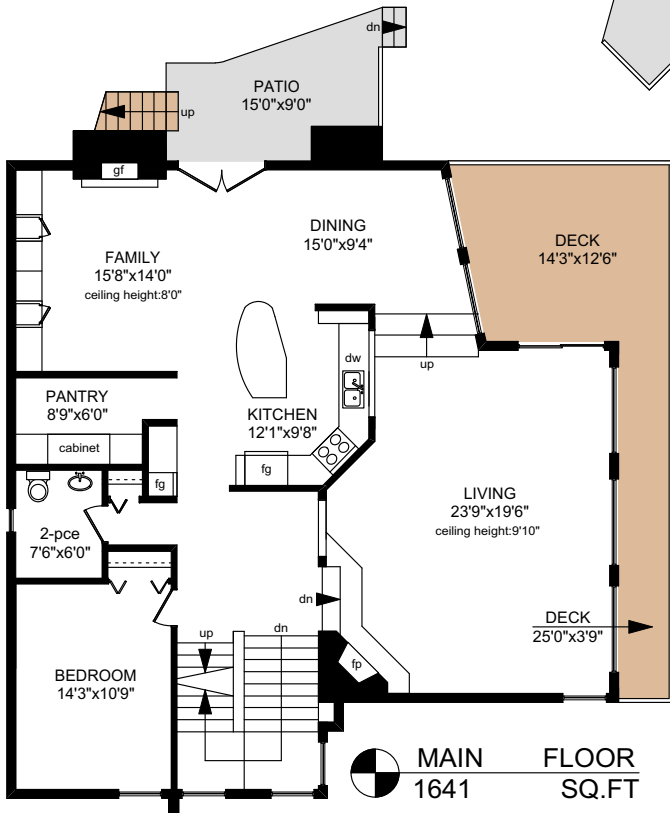
1919 QUIXOTE LANE



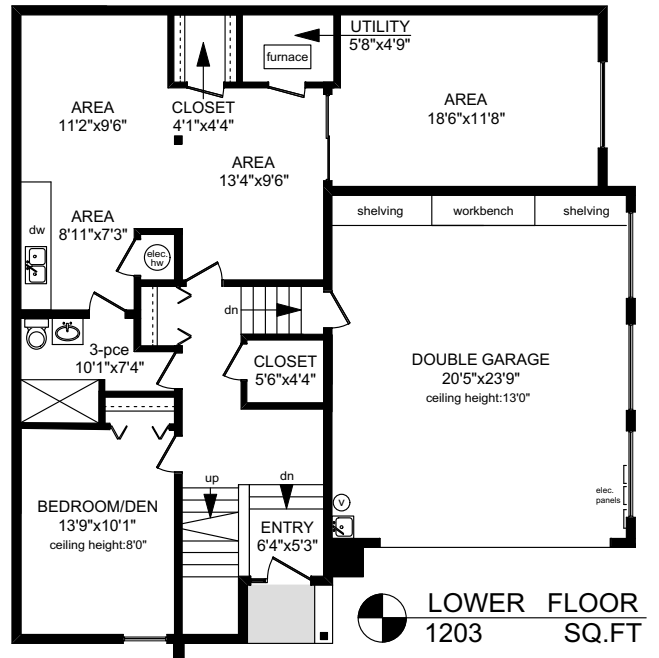
THIRD FLOOR
143 SQ.FT



SECOND FLOOR
1448 SQ.FT

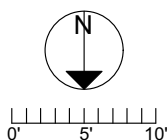


MAIN FLOOR
1641 SQ.FT



LOWER FLOOR
1203 SQ.FT

	FINISHED SQ. FT.	UNFINISHED SQ. FT.	TOTAL SQ. FT.
MAIN	1641	0	1641
SECOND	1448	0	1448
THIRD	87	56	143
LOWER	1203	0	1203
TOTAL	4379	36	4435
GARAGE	0	529	529
DECKS	0	1757	1757
PATIOS	0	526	526



PREPARED FOR THE EXCLUSIVE USE OF
LESLEE FARRELL, ASSOCIATE BROKER,
MACDONALD REALTY Ltd.

MEASURED ON: 01/22/18
DRAWING FILE: 14530

Tafmeasure VICTORIA, B.C.
Ph. 883.8894
www.tafmeasure.com