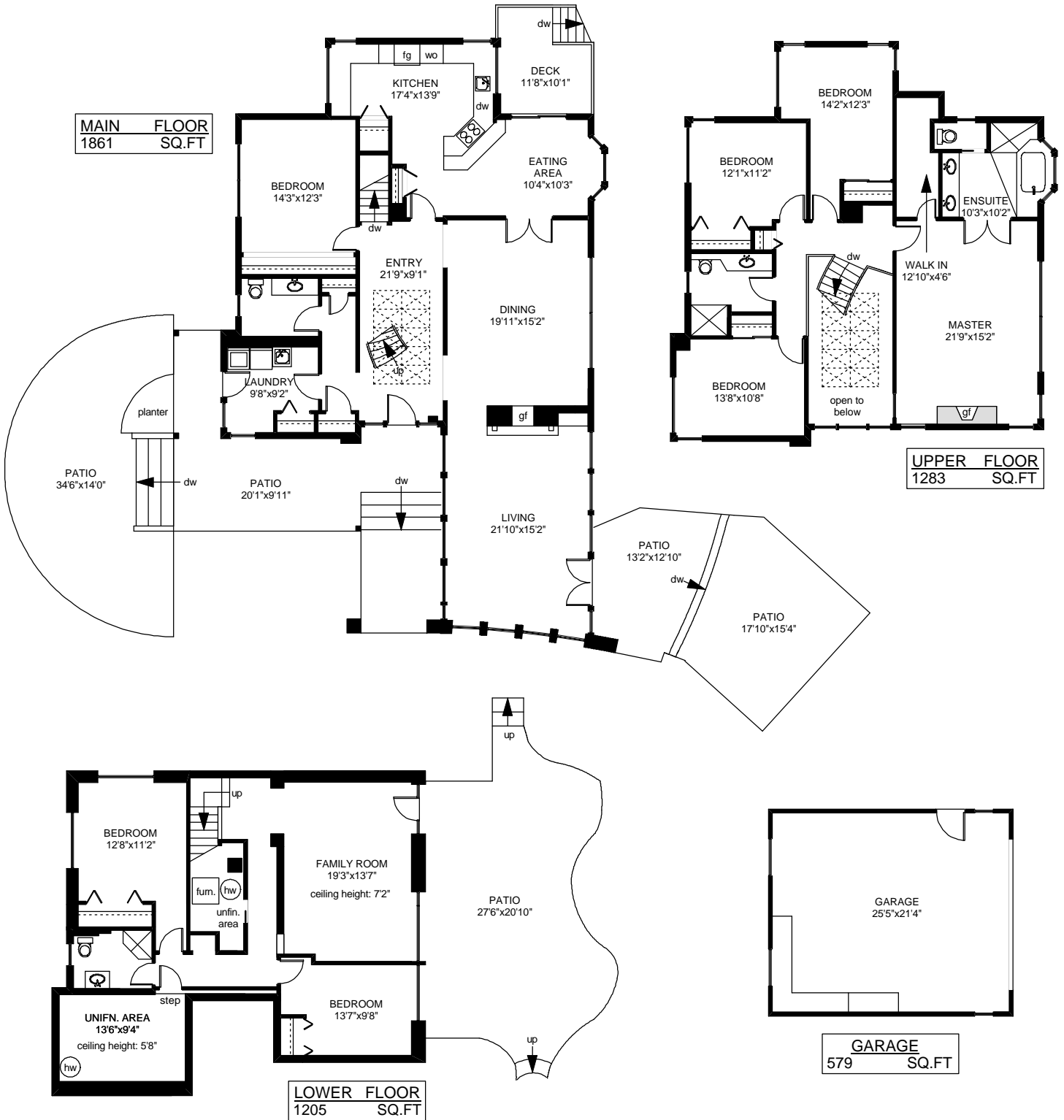
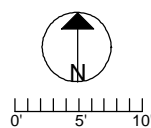


5605 PARKER AVENUE



	FINISHED SQ. FT.	UNFINISHED SQ. FT.	TOTAL SQ. FT.
MAIN	1861	0	1861
UPPER	1283	0	1283
LOWER	977	228	1205
TOTAL	4121	228	4349
GARAGE	0	579	579
DECK	0	101	101
PATIOS	0	1736	1736



PREPARED FOR THE EXCLUSIVE USE OF
LESLEE FARRELL OF
MACDONALD REALTY VICTORIA

MEASURED ON: 06/27/05
DRAWING FILE: 06357

Tafe Measure VICTORIA, B.C.
Ph. 883.8894
www.tafemeasure.com